



**Dog Friendly 3BR/2BA with Loft and Mountain Views**

## **"The Hill Hideaway"**

---

248 The Hill Road, #T-9, Basye,  
VA 22810 US



Since Google Maps and Waze take you slightly out of the way and up a wrong one-way street at our condo, we wanted to give you better directions below.

When you're approaching the vicinity of the condo, you'll see a gas station on your left. Take a LEFT at 'The Hill Road' which is at the intersection just past the gas station.

Then take your first right into the complex.

You'll see a three-way fork in the road. Stay in the MIDDLE and keep driving past the first set of condos. Our condo building is PAST THAT and ahead of you towards the right.

Our address is 248 The Hill Road, Unit #T-9. There is plenty of parking outside the unit.

Look for Unit "TML 9" (which means top, middle, lower) - our unit is T-9 which is the TOP UNIT. The entrance is nearest to the handicap parking sign.

There is a sign on the front door that says "The Hill Hideaway."

We hope you have a great stay! Please message us in the app with any questions.







For trash location, take a right out of walkway and head straight towards end of parking lot. The trash bin is the light box at the end.

# Hiking & Biking

## HIKING

More than 500 miles of trails cross Shenandoah National Park, which can make it tough to choose one or two day hikes. Many of the hikes can be accessed with ease from Skyline Drive, the byway that runs the length of the national park. Hike to waterfalls, geological formations, scenic views, historic cemeteries, even a one-time presidential retreat. Here are 10 of 35 possible hikes.

Visit <https://gohikevirginia.com/skyline-drive-hikes/> for more info.

- |                     |                       |                           |
|---------------------|-----------------------|---------------------------|
| 1. Fox Hollow Trail | 4. Compton Peak       | 8. Mary's Rock            |
| 2. Snead Farm Loop  | 5. Fort Windham Rocks | 9. Buck Hollow-Buck Ridge |
| 3. Lands Run Falls  | 6. Sugarleaf Loop     | 10. Hazel Falls           |

Big Schloss is another treasure in the George Washington National Forest. Relatively easy at only 4.4 miles and 1,000 vertical feet, it's the sister hike to Tibbet Knob which heads to the south from the same parking location. Tibbet Knob has two short rock scrambles, but a 10th of the hikers, and just as good views. Pack a lunch and soak in the view. 16 miles, 30 minutes

## BIKING

Explore the backcountry of Bryce and use [www.strava.com](http://www.strava.com) to follow along with these gravel, single-track, and road routes.

- **ORKNEY-LAKE LAURA - 11.06 Miles, 987' Elevation**
  - A short beginner-intermediate loop with minimal climbing featuring trails around Orkney Springs and Lake Laura.
- **LAUREL/GREAT NORTH MTN/PURPLE TRAIL - 27.61 Miles, 4063' Elevation**
  - All single track climb to North Mtn ridge traverse to Purple Trail descent back to Bryce.
- **JUDGE RYE/NORTH MOUNTAIN/STACK ROCK - 27.8 Miles, 3717' Elevation**
  - Start with a gravel climb up Judge Rye to the ridge where you'll traverse across to a technical Stack Rock descent.
- **CROOKED RUN TO PURPLE TRAIL DESCENT - 14.49 Miles, 2093' Elevation**
  - This intermediate-advanced loop has some of the best views around as you traverse the ridge to a fast and technical descent.
- **LAUREL RUN TO STACK ROCK - 6.5 Miles, 1824' Elevation**
  - A short but challenging loop featuring a punchy climb, scenic and rocky ridgeline followed by one of the best descents off the ridge.
- **ROCKTOWN RAMBLER - 25 Miles, 2700' Elevation**
  - Race course for the Rocktown Rambler gravel race featuring some of the best gravel roads and fantastic scenery.
- **JUDGE RYE/CROOKED RUN GRAVEL - 31.2 Miles, 4372' Elevation**
  - Long, challenging, gravel climbs and descents with rewarding views of the surrounding valley.





# Things To Do

## LURAY CAVERNS

Luray Caverns is the largest and most popular caverns in Eastern America. Leashed pets are allowed on the grounds outside. Guests are permitted to carry small pets on the tour. Open weekdays 9-4pm and weekends 9-5pm. There are several ways you can get discounts.

- Children 5 and under: no charge
- 50% off second adult ticket with a Giant or Martin's BonusCard (only available for tickets purchased on site)
- \$6 off or discounted tickets through military base

**31 miles, 45 minute drive, Luray, VA - (540) 743-6551**

## SKYLINE CAVERNS

On your one-hour tour, a knowledgeable guide will escort you through the Skyline Caverns, explaining the geological history while challenging your imagination. Skyline Caverns is one of the few places which hosts anthodite formations, with the largest known anthodite in the world.

**50 miles, 1 hour drive, Front Royal, VA - (540) 635-4545**

## JORDAN HOLLOW STABLES

Offers a unique trail riding experience with a 1.5 hour guided trail rides in the beautiful Shenandoah Valley. You will have the choice of a group trail ride with other like riders, or a private group ride with only people in your group (3 rider min). Trail rides cater to all riders' age 7 years old and up; both first time riders and experienced riders.

**35 miles, 48 minute drive, Luray, VA - (540) 778-2623**

## RIVER'S BEND RANCH

The ranch has been owned by the same family since the 1970's. Enjoy the peace & tranquility of the Blue Ridge Mountains, the ranch has an endless list of activities you can choose from: horseback trail rides, fishing, birding, walking trails, and lawn games.

**30 miles, 43 minute drive, Stanley, VA - (540) 652-1836**

## FORT VALLEY RANCH

When riding at the ranch, guests enjoy the tranquil setting of the woods, often spotting wildlife, like a bear, turkey, deer, raccoon or snake. Horses are fitted for beginner riders and options for all ages.

**25 miles, 40 minute drive, Fort Valley, VA - (540) 933-6633**

## ROUTE 11 CHIP FACTORY

Tour the potato chip factory and sample some delicious products.

**14 miles, 22 minute drive, Mt. Jackson, VA - (540) 477-9664**



## SHENANDOAH NATIONAL PARK

Looking for a day trip filled with hiking and spectacular scenery? Shenandoah National Park is bursting with cascading waterfalls, spectacular vistas, fields of wildflowers, and quiet wooded hollows. With over 200,000 acres there's so much to explore. The park is just under an hour away and a perfect addition to your trip. Here are the hiking trails that are kid friendly.

- Stony Man Trail
- Dark Hollow Falls Trail
- Whiteoak Canyon Trail

**49 miles, 55 minute drive**

## WOODSTOCK

Just 30 minutes down the road, the small yet attractive town of Woodstock makes for a great, quick getaway. You'll find fantastic breweries, restaurants, and culture. A few recommendations include the Woodstock Brewhouse and the Woodstock Cafe.

**21 miles, 33 minute drive**

## HARRISONBURG

This college town is bustling with life and is well worth the 45 minute drive south of Bryce. The town offers a wide variety of attractions including breweries, amazing restaurants, and plenty of activities.

**37.5 miles, 45 minute drive**

## THE VIRGINIA MUSEUM OF THE CIVIL WAR

The Virginia Museum of the Civil War is in New Market, Virginia. It commemorates the May 1864 Battle of New Market, which took place on the museum grounds. The site includes a 300-acre battlefield park and the historic Bushong Farm/museum display galleries. Open seven days a week, 9:00 a.m. to 5:00 p.m. Holiday closures: Thanksgiving Day, Christmas Eve and Christmas Day.

**18 miles, 30 minute drive, New Market, VA - (866) 515-1864**

## SHENANDOAH CAVERNS

Since 1922, the Shenandoah Caverns have become a popular tourist attraction in the Shenandoah Valley. Awe-inspiring natural wonders, fantastic geology, and unique crystalline formations 200 feet below the ground draw tourists worldwide. No reservations required, but can purchase online. Open 7 days a week. Holidays may differ.

**14 miles, 22 minute drive, Quicksburg, VA - (540) 477-3115**





# Things To Do

## BRYCE RESORT

Your premium destination for all things winter featuring a highly acclaimed snowsports school, snow tubing, ice skating and lively events to keep the party going after the lifts close.

### Golf at Bryce

The 18 hole PGA Championship course offers some of the best greens around. Spend a day out on the course and take in the stunning mountain scenery, tree-lined fairways, and refreshing views. Tee Times taken up to 10 days in advance. Groups of 12 or more may reserve 30 days in advance. Hours daily 8am-8pm.

**2.1 miles, 5 minute drive**

## STROLL THROUGH ORKNEY SPRINGS TRAIL

Orkney Springs Trail is an 11.6-mile loop trail in Basye. Hikers typically take around four hours to complete the challenging trail. From the trailhead, follow the purple paint on the trees. The first half-mile of the ascent is steep, and it only gets steeper. When you reach the top, you'll see the most incredible view. You won't run into too many other hikers or explorers, making it ideal for a day out in the fresh air.

**1.2 miles, 3 minute drive**

## LAKE LAURA

Located in southwest Shenandoah County, not far from the state boundary with West Virginia, is the 44-acre impoundment known as Lake Laura. It is perfect for swimming in the summer, boating, kayaking, or fishing.

**2.1 miles, 6 minutes, Basye, VA**

## LAKE CARROLL

Another lake you may enjoy in Basye is Lake Carroll. It is perfect for swimming, kayaking, or just floating with friends. It also has a signposted trail large enough for two individuals to walk side by side. The trail is flat or has mild inclines, making it ideal for families and the elderly. You may spot ducks, birds, turtles, and fish at Lake Carroll.

**1.8 miles, 5 minutes, Basye, VA**

## APPLE PICKING AND CIDER

Showalter's Orchard & Greenhouse - Pick apples or drink cider. Call ahead for times.

**15 miles, 25 minutes, Timberville, VA - (540) 896-7582**



# Wineries

It has been said by many that the Shenandoah Valley is one of the country's most exciting wine producing regions today. We're lucky to be near the Shenandoah Wine Trail, with these vineyards being less than 20 miles away.



## CAVE RIDGE VINEYARD

10 miles, 20 minutes, Mt. Jackson, VA - (540) 477-2585

## THIRD HILL WINERY

12 miles, 21 minutes, Quicksburg, VA - (540) 740-8464

## WINERY AT KINDRED POINTE

12 miles, 22 minutes, Mt. Jackson, VA - (540) 477-3570

## WOLF GAP VINEYARD

12 miles, 22 minutes, Edinburg, VA - (540) 984-3306

## SHENANDOAH VINEYARDS

17 miles, 28 minutes, Edinburg, VA - (540) 984 - 8699

## MUSE VINEYARDS

21 miles, 35 minutes, Woodstock, VA - (540) 459-7033

## SWOVER CREEK BREWERY

10 miles, 15 minutes, Edinburg, VA - (540) 984-8973

## OLD HILL CIDER

15 miles, 25 minutes, Timberville, VA - (540) 896-7582

## WOODSTOCK BREWHOUSE

21 miles, 34 minutes, Woodstock, VA - (540) 459-2739

## PALE FIRE BREWING CO.

32 miles, 47 minutes, Harrisonburg, VA - (540) 217-5452

## RIVER HILL DISTILLERY

32 miles, 47 minutes, Luray, VA - (540) 843-0890

## BLUESTONE VINEYARD

39 miles, 1 hour, Bridgewater, VA - (540) 828-0099

# Breweries

This beautiful region provides a way to reconnect with the important things in life – relax and enjoy the companionship of good friends amidst some of the nation's most beautiful farms and mountains.





### COMMUNITY STORE

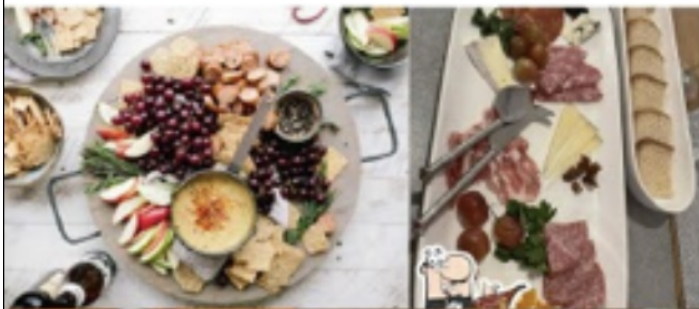
You can find a variety of foods including a deli where you can pick up fresh sandwiches and toiletries or last minute items. Store hours are 5am-9pm M-Th, Fri & Sat until 10pm and Sundays 7am-9pm.

### RHOUSE WINE AND CAFE

Enjoy a simple and relaxing atmosphere with food, beer, wine and charcuterie boards. Open Thursday-Saturdays 5-9pm.

### BRYCE RESORT DINING

Bryce resort offers three different dining locations. For a fine seated meal make reservations at Copper Kettle. You can also enjoy some grab and go options or dining at the Shenandoah center or Carter's Hutte.



### SWOVER CREEK FARMS AND BREWERY

Just a 15 minute drive offering wood-fired pizzas, sausages, salads and more. Enjoy outdoor dining, home crafted beer and is dog/kid friendly!

### OLD HILL CIDERY

Just a 25 minute drive exploring this fun and beautiful orchard. You can pick apples or relax enjoying the views. Food and of course cider offered. Check online, may be closed during some winter months.